



XLB45 Series Video Microscope

XLB Series of video microscope is kind of zoom monocular microscope, Adapt unique technology of eliminate-stray light and extended depth of field. The feature such like Clear image, Stereoscopic impression, long working distance, wide of field of view ETC. Match with high definition of colors CCD and television. It is widely be used in the modernize production of machine vision field, industry inspection field, scientific research field.



XLB45-B3



XLB45 Series Specification

Compact physical design makes all of function focusing, Suitable narrow installation space of modern- equipment.

XLB45 Series of microscope widely be used in micro-electronics, powder metallurgy, jewelry, mold, precision machinery, horologe, fingerprint identify, tickets or bill to identify true or bogus ETC. Especially suitable observe the surface microstructure of big objective.

Magnification	0.7X~4.5X zoom objective, zoom ratio 1:6.4
Standard Set	0.35X~2.25X (with 0.5XCCD Adaptor)
Field of View Coverage	17.6~2.7mm (with 0.5X CCD Adaptor, 1/3" Sensor Camera)
Adjustable range	Vertical Pillar Height: 340mm, Base size: 380*260*20mm
Focus arm	Adjustable lift range: 50mm, Draw tube size : Φ 50mm to Φ 25mm
Working distance	96mm(1X objective)



LED 90 Ring Lamp

Adjustable LED Ring Illuminator for XLB45



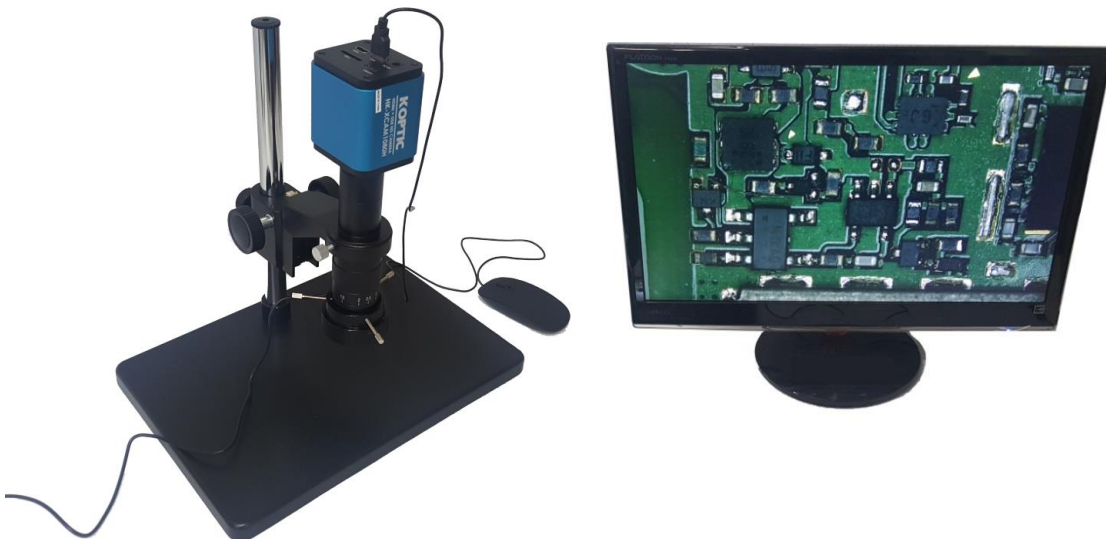
90 LED bulbs

LED connecting dia. inner 50mm, outer 58mm, center hole dia. 34mm

Power: 9W, Output: DC 12V, Input: AC90-260V / 47-63Mz



Applications



<XLB45-B3 + HDMI1080 Camera>